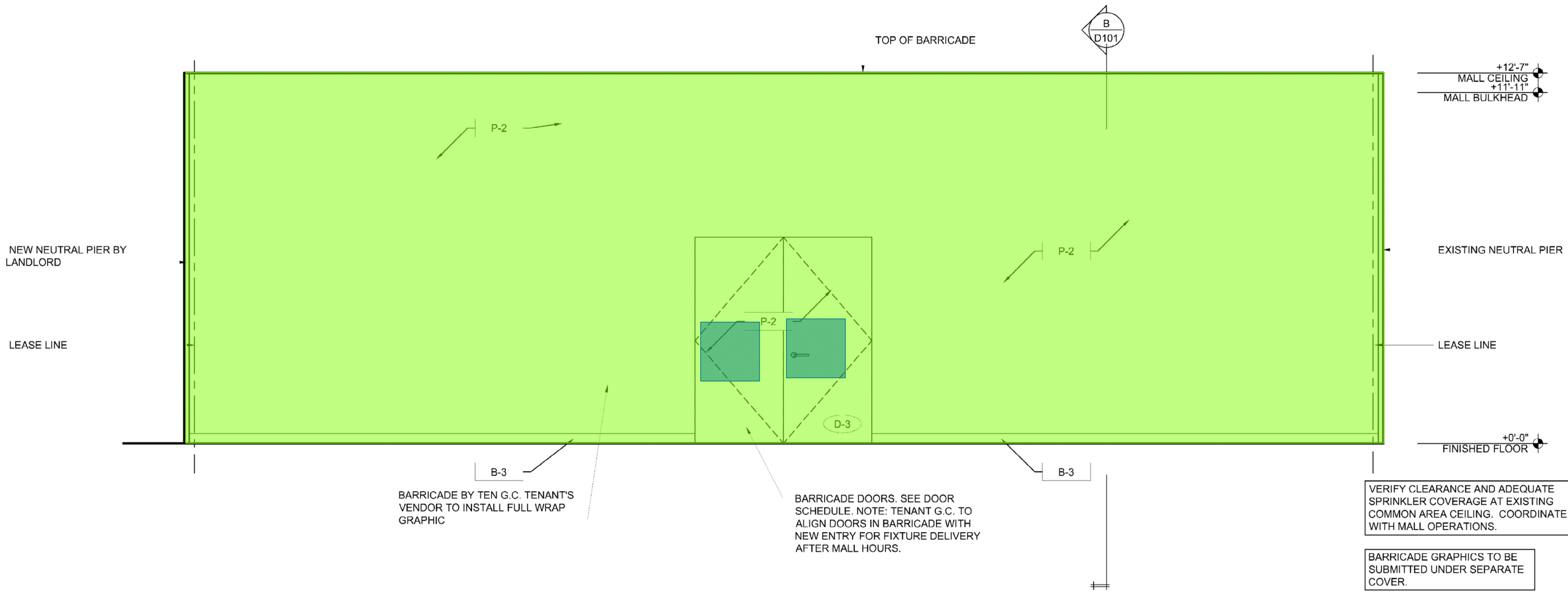


WD. DOOR PTD. 2 EA

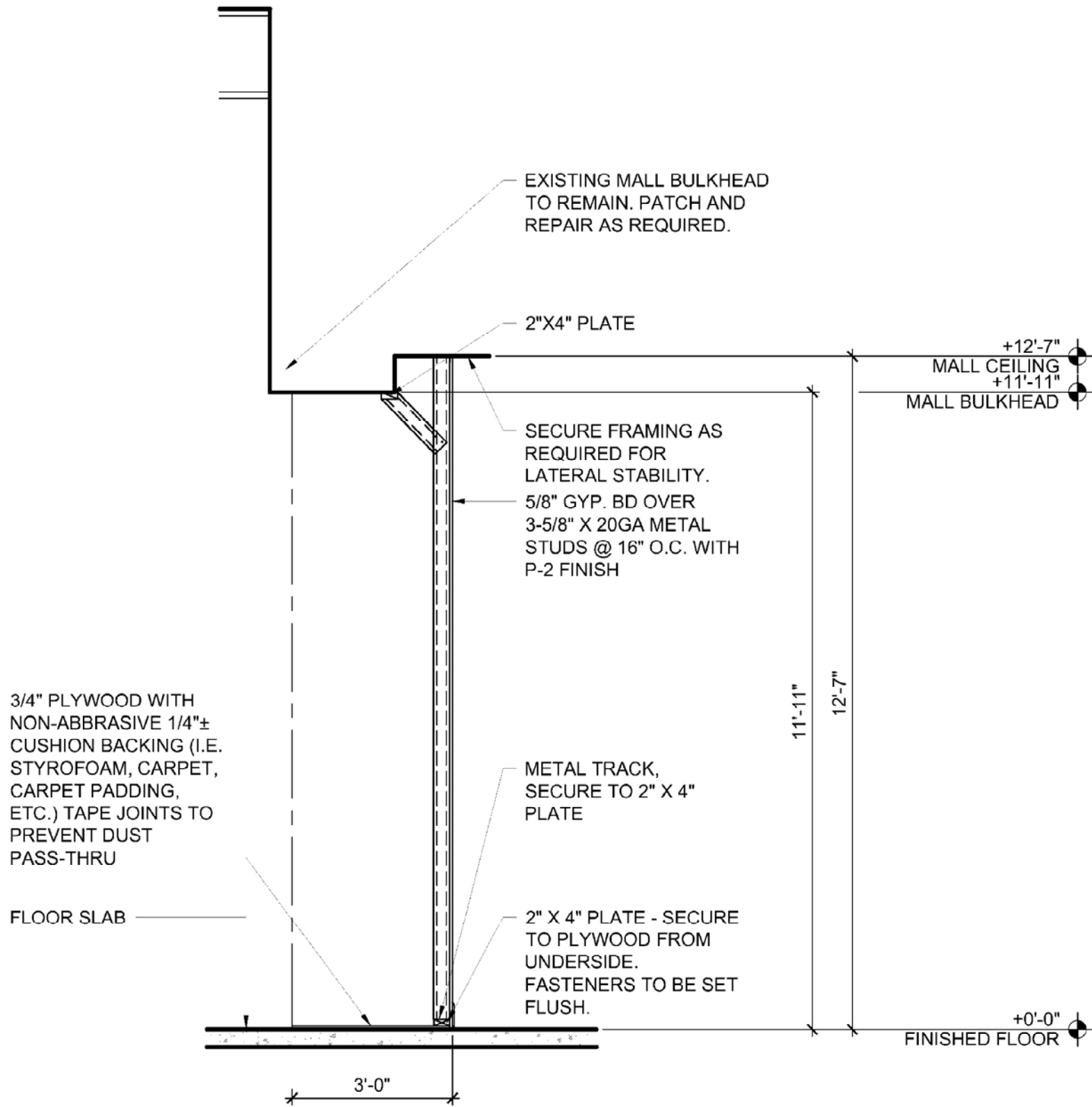
AREA DW WALLS LES 512 SF



BARRICADE ELEVATION

BARRICADE NOTES

- TENANT G.C. TO FURNISH AND CONSTRUCT A TEMPORARY BARRICADE(S) OF 3-5/8" METAL STUDS @ 16" O.C. WITH ONE LAYER OF 5/8" GYP. BD. (MALL SIDE) TAPED, SPACKLED AND SANDED SMOOTH. GYP. BD. TO EXTEND TO MALL BULKHEAD TO CREATE DUST-PROOF CONDITION. BARRICADES ARE TO BE ADEQUATELY SECURED AND BRACED TO MALL BULKHEAD FRAMING FOR LATERAL STABILITY AND MUST BE STRUCTURALLY SOUND
- PAINT - ONE COAT PRIMER AND TWO COATS P-2
- TENANT G.C. TO COORDINATE INSTALLATION OF GRAPHIC WITH TENANT'S VENDOR
- TENANT G.C. IS RESPONSIBLE FOR MAINTAINING BARRICADE DURING CONSTRUCTION
- TENANT G.C. TO CONSULT WITH MALL REPRESENTATIVE FOR HOURS IN WHICH WORK ON BARRICADE CAN OCCUR
- TENANT G.C. SHALL REMOVE BARRICADE WHEN 100% OF STOREFRONT IS COMPLETE OR A MINIMUM OF TWO NIGHTS PRIOR TO OPENING. CARE IS TO BE TAKEN WHEN DISASSEMBLING AND REMOVING BARRICADE. PAPER WINDOWS WITH CRAFT CONSTRUCTION PAPER OVER GLAZING ONLY. TRIM 1/2" OFF EDGES AND TAPE CONTINUOUSLY AROUND PERIMETER WITH WHITE TAPE. DO NOT USE BLACK PLASTIC. DISCUSS ANY ALTERNATIVES WITH CONSTRUCTION MANAGER PRIOR TO INSTALLING.
- TENANT G.C. TO RESTORE MALL FLOORING AND BULKHEAD TO A 'LIKE NEW' CONDITION AND FINISH
- ALL DELIVERIES TO SPACE DURING MALL HOURS SHALL BE MADE THROUGH SECONDARY EXIT. BARRICADE DOORS FOR FIXTURE & OVERSIZED MATERIAL DELIVERY AFTER MALL HOURS ONLY.
- IF BARRICADE IS EXISTING, TENANT G.C. IS TO PREPARE FACE OF BARRICADE PER TENANTS STANDARDS FOR GRAPHIC INSTALLATION.
- BARRICADE IS TO BE 100% COMPLETE AND READY FOR TENANT GRAPHICS TO BE INSTALLED NOT MORE THAN FOUR DAYS AFTER CONSTRUCTION START. TENANT G.C. TO CONTACT C.M. UPON COMPLETION TO COORDINATE GRAPHIC INSTALL WITH GRAPHIC VENDOR.
- TENANT'S VENDOR TO SUBMIT BARRICADE GRAPHICS TO LANDLORD / MALL MANAGER FOR REVIEW



BARRICADE SECTION

STORE #471

COPYRIGHT NOTICE:
These drawings and specifications are copyrighted and subject to copyright reduction as an "Architectural work" under sec. 102 of the copyright act. 17 U.S.C. As amended January 2002. The protection includes, without limitation, the overall form, arrangement and composition of spaces and elements of the design. Under such protection, the unauthorized use of these drawings and specifications may result in criminal prosecution, liability, seizure, and/or monetary liability.

PAC SUN

REVISIONS

PER CITY
XX.XX.XXXX

AAD:FITCH, Inc.
FITCH
1045 North Broadway St., Suite 105
Dorchester, Arizona 86304
T 480 399 0222 www.aadfitch.com



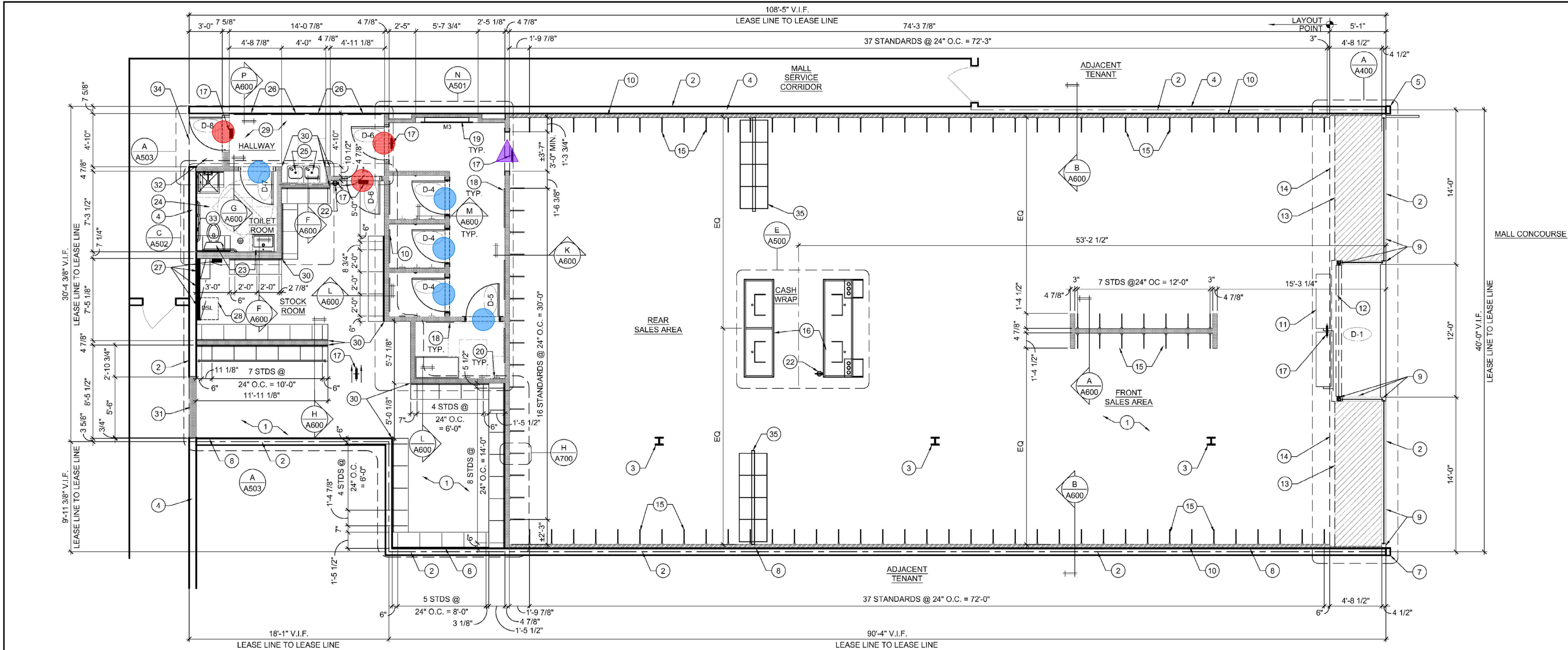
MALL AT FOX RUN
50 FOX RUN RD SPACE #G001A-3
NEWINGTON, NH 03801
CONSTRUCTION BARRICADE
ELEVATION, SECTION

DATE: 12-12-2014
SCALE: 1/4" = 1'-0"
DRAWN BY: PV
PROJECT NUMBER: 320103287

SHEET:

D101

REV:



- WD. DOOR PTD. & WD. FRAME PTD. 5 EA
- HM DOOR & DOOR FRAME PTD. 3 EA
- ▲ WD. SGL. FRAME PTD. 1 EA

CONSTRUCTION FLOOR PLAN

SOUND ATTENUATION WALL NOTE

TENANT G.C. SHALL PROVIDE AND INSTALL OWENS CORNING 4" SOUND ATTENUATION FIRE BATT MINERAL WOOL INSULATION AT THE SALES AREA AND FITTING ROOM PERIMETER WALLS. FRICTION FIT BATT INSULATION BETWEEN METAL STUDS - BUTT INSULATION WITH ENDS AND EDGES CLOSE TOGETHER AND FILL ALL VOIDS WITH ADDITIONAL INSULATION.

TENANT G.C. SHALL PROVIDE AND INSTALL 5/8" GYP. BD. (1/2" GYP. BD. @ RECESSED STANDARDS) FROM FLOOR TIGHT TO TOP TRACK, TAPE JOINTS AS NEEDED TO ELIMINATE ALL HOLES. WALLS SHALL BE SEALED AT BOTTOM AND TOP TRACKS WITH NON-HARDENING PERMANENTLY RESILIENT CAULKING (SUCH AS BUTYL RUBBER BASE COMPOUND).

CONSTRUCTION FLOOR PLAN NOTES

TENANT G.C. TO PROVIDE AND INSTALL FIRE EXTINGUISHERS FOR STORE OPERATION AS REQUIRED BY FIRE DEPARTMENT INSPECTOR. AT A MINIMUM, PROVIDE A PORTABLE FIRE EXTINGUISHER WITH A RATING OF NOT LESS THAN 2A10BC WITHIN 75' TRAVEL DISTANCE TO ALL PORTIONS OF THE BUILDING BY CONTRACTOR DURING CONSTRUCTION.

SPRINKLER SYSTEM DRAWINGS SHALL BE SUBMITTED AND REVIEWED UNDER SEPARATE PERMIT.

A 44" CLEAR AISLE SHALL BE PROVIDED AND MAINTAINED THROUGH ROOMS TO EXIT DOORS FOR EGRESS.

TENANT G.C. SHALL REPAIR OR REPLACE ALL DAMAGED FIRE-PROOFING WHEN APPLICABLE.

ENTRY DOORS SHALL BE CLOSED AND LOCKED AFTER BUSINESS HOURS.

COMBUSTIBLE MATERIALS SHALL NOT BE USED ABOVE CEILINGS. REFER TO RCP ON A300.

ALL SECURITY DOOR AREAS SHALL BE PROVIDED WITH A KEY LOCKING DEVICE SO AS TO ENABLE DOOR TO BE UNLOCKED IN OPEN POSITION AND LOCKED DURING BUSINESS HOURS (WITH THE EXCEPTION OF THE REAR SERVICE DOOR). (PER LOCAL BUILDING CODE REQUIREMENTS)

EMERGENCY LIGHTING SHALL BE PROVIDED WITH AN ILLUMINATION VALUE OF ONE FOOTCANDLE (MINIMUM) AT FLOOR LEVEL, THROUGHOUT EGRESS PATH.

ONLY PANIC HARDWARE APPROVED AND LISTED BY THE STATE OR LOCAL FIRE MARSHALL SHALL BE INSTALLED AT REAR SERVICE DOOR (NOT APPLICABLE FOR EXISTING REMODELS).

EXIT DOORS SHALL SWING IN THE DIRECTION OF EXIT TRAVEL WHEN SERVING AREAS WITH AN OCCUPANT LOAD OF 10 OR MORE PERSONS.

DOORS OPENING INTO ONE-HOUR FIRE-RESISTIVE EXIT HALLWAY SHALL BE PROTECTED WITH A SMOKE OR DRAFT STOP FIRE ASSEMBLY HAVING A MIN. 20 MINUTE RATING.

EXIT SIGNS SHALL BE ELECTRICALLY ILLUMINATED AND THE TWO LAMPS SHALL BE ENERGIZED FROM SEPARATE CIRCUITS WITH 90 MINUTE BATTERY BACK-UP. ILLUMINATION SHALL NORMALLY BE PROVIDED BY THE PREMISES WIRING SYSTEM. IN THE EVENT OF FAILURE OF THIS SYSTEM, ILLUMINATION SHALL BE AUTOMATICALLY PROVIDED FROM AN EMERGENCY SYSTEM.

FIRE DAMPERS OR ACCESS DOORS SHALL BE PROVIDED WHERE DUCTS PENETRATE FIRE-RATED WALLS OR CEILINGS. REFER TO M100.

EVERY EXIT DOOR SHALL BE OPERABLE FROM THE INSIDE WITHOUT THE USE OF A KEY, TOOL OR SPECIAL KNOWLEDGE OR EFFORT.

ALL DIMENSIONS ON PLANS ARE FROM FACE OF GYPSUM BOARD TO FACE OF GYPSUM BOARD UNLESS NOTED OTHERWISE.

FRAMING LAYOUT START POINT NOTE

TENANT G.C. IS RESPONSIBLE TO MEASURE (VERIFY) OVERALL DIMENSIONS, COLUMN SIZE & LOCATIONS, BULKHEAD HEIGHT, ETC. OF SPACE AFTER DEMOLITION (ALSO CONFIRM CEILING CLEARANCES AND LOOK FOR ANY OTHER POTENTIAL OBSTRUCTIONS). IF FIELD DIMENSIONS VARY BY ANY AMOUNT FROM THE DIMENSIONS NOTED IN THIS SET OF CONSTRUCTION DOCUMENTS, THE CONTRACTOR SHALL NOT CONTINUE FRAMING LAYOUT UNTIL DIRECTED BY TENANT (CONTRACTOR SHALL NOTIFY TENANT'S CONSTRUCTION MANAGER IMMEDIATELY IN WRITING OF ANY DIMENSION DISCREPANCIES OR BUILDOUT OBSTRUCTIONS). IF OVERALL DIMENSIONS OF SPACE MATCH THIS SET OF CONSTRUCTION DOCUMENTS, THE CONTRACTOR SHALL BEGIN FRAMING LAYOUT BY SNAPPING CHALKLINES OF ALL WALL LOCATIONS BEFORE BEGINNING TO SECURE TRACK. SEE PLAN ABOVE FOR LAYOUT START POINT. IF LAYOUT START POINT IS NOT INDICATED ON PLANS, TENANT G.C. SHALL CALL ARCHITECT IMMEDIATELY AND TO OBTAIN START POINT IN WRITING. ALL SALES AREA AND FITTING ROOM DIMENSIONS ARE HOLD DIMENSIONS AND SHALL NOT BE ADJUSTED ON SITE UNLESS DIRECTED BY TENANT IN WRITING. IF FRAMING CONTRACTOR DOES NOT FOLLOW THESE PROCEDURES, ANY REQUIRED REWORK THAT IS CONSIDERED AVOIDABLE SHALL BE DONE BY TENANT G.C. AT TENANT G.C.'S EXPENSE.

IN-WALL BLOCKING NOTE

ALL IN-WALL BLOCKING SHALL BE IN ACCORDANCE WITH BUILDING CODES (REFER TO CONSTRUCTION CLASSIFICATION ON COVER SHEET THIS SET).

- F.R.T. WOOD BLOCKING MAY BE USED FOR (1) HOUR F.R. CONSTRUCTION TYPES AND TYPE IV AND TYPE V CONSTRUCTION TYPES AS PERMITTED BY LOCAL A.H.J.

- F.R.T. WOOD BLOCKING IS NOT APPROVED IN TYPE I AND TYPE II-A AND NON-COMBUSTIBLE CONSTRUCTION TYPES. ALL IN-WALL BLOCKING IN THESE CONSTRUCTION TYPES SHALL BE 16GA. METAL (MINIMUM 6" WIDE AND SHALL SPAN MINIMUM 2 STUDS).

WALL TYPES

(B) A600 (N) WALL FURRING: METAL STUDS @ 24" O.C. (MAX.) WITH (1) LAYER 5/8" TYPE 'X' GYP. BD.

(A-J-L) A600 (N) NON RATED PARTITION: (1) LAYER 5/8" TYPE 'X' GYP. BD. EACH SIDE. (2) 1/2" GYP. BD. ON METAL STUDS @ 16" O.C. OR PER WALL STANDARD STUDS AS INDICATED ON DETAIL M/A700. INSTALL GYP. BD. ON ONE SIDE ONLY AT BACK TO BACK CONDITIONS (REFER TO SPECIFIC DETAILS). NOTE: AT TOILET ROOM WALLS THAT SHARE SALES AREA WALLS, FITTING ROOM WALLS THAT SHARE NON-SALES AREA WALLS, AND IN FURRED OUT WALLS ALONG SALES AREA DEMISING WALLS SHARED WITH ADJACENT TENANT FILL WITH 3 1/2" FRICTION FIT BATT INSULATION (STC 42 OR BETTER). TENANT G.C. TO USE 6" STUD FOR PLUMBING WALLS AS REQ'D. NOTE: WALLS TO SUPPORT NON-SALES PARTITION STANDARDS ARE TO RECEIVE 18 GA. METAL STUDS (TYPICAL UNLESS NOTED OTHERWISE).

(M) A600 (N) PARTIAL HEIGHT INTERIOR PARTITION: METAL STUDS @ 16" O.C. (MAX.) WITH 5/8" TYPE 'X' GYP. BD. PROVIDE GYP. BD. ON ONE OR BOTH SIDES AS REQUIRED. SEE SHEET A300 FOR CEILING HEIGHT, WALL IS TO 9'-0" A.F.F.

(E-G) A600 (N) PARTIAL HEIGHT INTERIOR PARTITION WITH PLATFORM ABOVE: METAL STUDS @ 16" O.C. (MAX.) WITH 5/8" TYPE 'X' GYP. BD. PROVIDE GYP. BD. ON ONE OR BOTH SIDES AS REQUIRED. SEE SHEET A300 FOR CEILING HEIGHT, WALL IS TO UNDERSIDE OF CEILING.

(I) A600 (N) ONE HOUR FIRE PARTITION (AND/OR DEMISING WALLS): 3 5/8" METAL STUDS @ 16" O.C. WITH 5/8" TYPE 'X' GYPSUM BOARD TIGHT TO DECK ABOVE (TENANT SIDE ONLY EXCEPT AT MALL CORRIDOR - BOTH SIDES) BY TENANT G.C. TO MAINTAIN 1 HOUR RATING PER U.L. DESIGN U465, SEE CONSTRUCTION PLAN NOTES.

(J) A600 (E) INTERIOR OR DEMISING PARTITION: TENANT G.C. SHALL PATCH AND REPAIR OR REPLACE 5/8" GYP. BD. TYPE 'X' IF REQUIRED. MAINTAIN EXISTING FIRE RATING.

FLOOR PLAN KEYNOTES

1 EXISTING DECK ABOVE. SEE A300

2 LEASE LINE

3 EXISTING STRUCTURAL COLUMN. SEE A200 FOR NEW FINISHES

4 EXISTING DEMISING WALL. REFER TO WALL LEGEND FOR FURTHER INFORMATION

5 EXISTING NEUTRAL PIER TO REMAIN. G.C. TO PATCH AND REPAIR AS NEEDED.

7 NEW NEUTRAL PIER BY LANDLORD

8 NEW GYP. BD. ON NEW DEMISING WALL STUDS BY L.L. G.C. TO INSTALL (1) LAYER 5/8" TYPE 'X' GYP. BD. TO DECK. TAPE AND SEAL FOR (1) HOUR RATING PER U.L. #U-465

9 NEW GLASS AND ALUMINUM STOREFRONT SYSTEM PROVIDED AND INSTALLED BY TENANT G.C.

10 TENANT G.C. SHALL INSTALL SOUND ATTENUATING BATT INSULATION IN THIS WALL (SEE SOUND ATTENUATING NOTE THIS SHEET)

11 LOCATION OF WG PREMIERE II (ANTI THEFT) SYSTEM EMBEDDED IN LANDLORD'S CONCRETE SLAB. SEE SHEET A400 AND ELECTRICAL DRAWINGS. TENANT G.C. TO BUSH DOWN INTO CONCRETE A MIN. OF 1".

12 ROLLING GRILLE. SEE SHEET A400

13 LINE OF G.C. BUILT WOOD DISPLAY PLATFORMS. SEE SHEETS A200 & A401

14 LINE OF HEADER ABOVE

15 SURFACE MOUNTED WALL STANDARD

16 CASH WRAP FIXTURES PROVIDED BY TENANT, INSTALLED BY TENANT G.C. SEE SHEETS A500 AND E101 FOR ELECTRICAL INFORMATION.

17 ILLUMINATED EXIT SIGN ABOVE, SEE SHEETS A300 AND E200

18 SALES AREA/FITTING ROOM WALL MOUNTED MIRROR, SIZE NOTED ON PLAN - TENANT G.C. SHALL PROVIDE IN-WALL BLOCKING AND HANG MIRROR WITH MINIMUM OF (6) 3" WOOD SCREWS SECURED INTO IN-WALL BLOCKING. SEE DETAIL B/A501

19 CUSTOM BACKLIT MIRROR. SEE SHEET A501B

FLOOR PLAN KEYNOTES

20 FITTING ROOM AREA CLOTHES HOOK - TENANT G.C. TO PROVIDE IN-WALL BLOCKING FOR WALL MOUNTED HOOKS, SEE DETAIL D/A501

21 ACCESSIBLE FITTING ROOM BENCH, SEE DETAIL C/A501

22 2A10BC FIRE EXTINGUISHER BY TENANT G.C. - TENANT G.C. TO COORDINATE EXACT LOCATIONS AND QUANTITIES WITH FIRE MARSHALL

23 HANDICAP ACCESSIBLE PLUMBING FIXTURES, SEE PLUMBING DRAWINGS FOR DETAILS/SPECIFICATIONS

24 TENANT G.C. TO USE MOISTURE RESISTANT GYP. BD. IN TOILET ROOMS

25 WALL MOUNTED HANDICAP ACCESSIBLE DRINKING FOUNTAIN WITH FRP BD. AROUND, SEE SHEET A502 AND PLUMBING DRAWINGS

26 BULLETIN BOARDS (4) - 36"W. x 48"H., BOTTOM OF BOARD TO BE MOUNTED @ 48" A.F.F. - COORDINATE LOCATIONS WITH STORE OPERATIONS

27 LOCATION OF TELEPHONE AND ELECTRIC PANELS (SURFACE MOUNTED), SEE ELECTRICAL DRAWINGS FOR ADDITIONAL INFORMATION

28 ELECTRICAL TRANSFORMER ON FLOOR. SEE ELECTRICAL DWGS AND SHEET A702 FOR ALTERNATE DETAILS

29 HALLWAY GALVANIZED WALL PANELS. SEE DETAIL R/A504

30 METAL CORNER GUARDS - SEE DETAIL B/A700. INSTALL ON COLUMNS AND ALL OUTSIDE CORNERS IN HALLWAY AND STOCK ROOM (SUPPLIED AND INSTALLED BY TENANT G.C.)

31 TENANT G.C. TO INFILL TO MATCH EXISTING CONSTRUCTION AND FIRE RATING: 8" CMU. FINISH AT MALL SIDE TO MATCH EXISTING

32 NEW ALCOVE. TENANT WALL CONSTRUCTION TO BE 5/8" GYP. BD. BOTH SIDES ON 3 5/8" METAL STUDS @ 16" O.C. TAPE AND SEAL FOR 1 HR RATING PER U.L. U-465. FINISH ON MALL SIDE TO MATCH EXISTING

33 NEW GYP. BD. ON EXISTING DEMISING WALL

34 NEW OPENING/LINTEL AT EXISTING CMU WALL. SEE DETAIL M/A702

35 MOVEABLE MODULAR FIXTURES PROVIDED AND INSTALLED BY TENANT

STORE #471

COPYRIGHT NOTICE:
These drawings and specifications are copyrighted and subject to copyright protection as set forth in the copyright notice on the title block. No part of these drawings or specifications may be reproduced, stored in a retrieval system, or transmitted in any form or by any means, electronic, mechanical, photocopying, recording, or by any information storage and retrieval system, without the prior written permission of the copyright owner. The copyright owner shall not be liable for any damages, including reasonable attorneys' fees, resulting from the use of these drawings and specifications without the prior written permission of the copyright owner.

10/15/2015
11/15/2015
12/15/2015

REVISIONS

PER CITY
XX.XX.XXXX

ADD: FITCH, Inc.

FITCH

10/15/2015
11/15/2015
12/15/2015

BLAIR
S. LEACH
No. 3984


THE STATE OF NEW HAMPSHIRE


12/22/14


MALL AT FOX RUN
50 FOX RUN RD SPACE #G001A-3
NEWINGTON, NH 03801

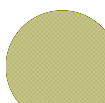
CONSTRUCTION FLOOR PLAN


DATE: 12-12-2014
SCALE: 1/4" = 1'-0"
DRAWN BY: PV
PROJECT NUMBER: 320103287
SHEET: A100
REV:


 18'9" DW WALLS LES 3,628 SF

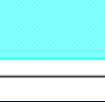
 CUT LINE 194 LF


 WOOD BASE PTD. 301 LF


 19' STL. COLUMNS PTD. 3 EA

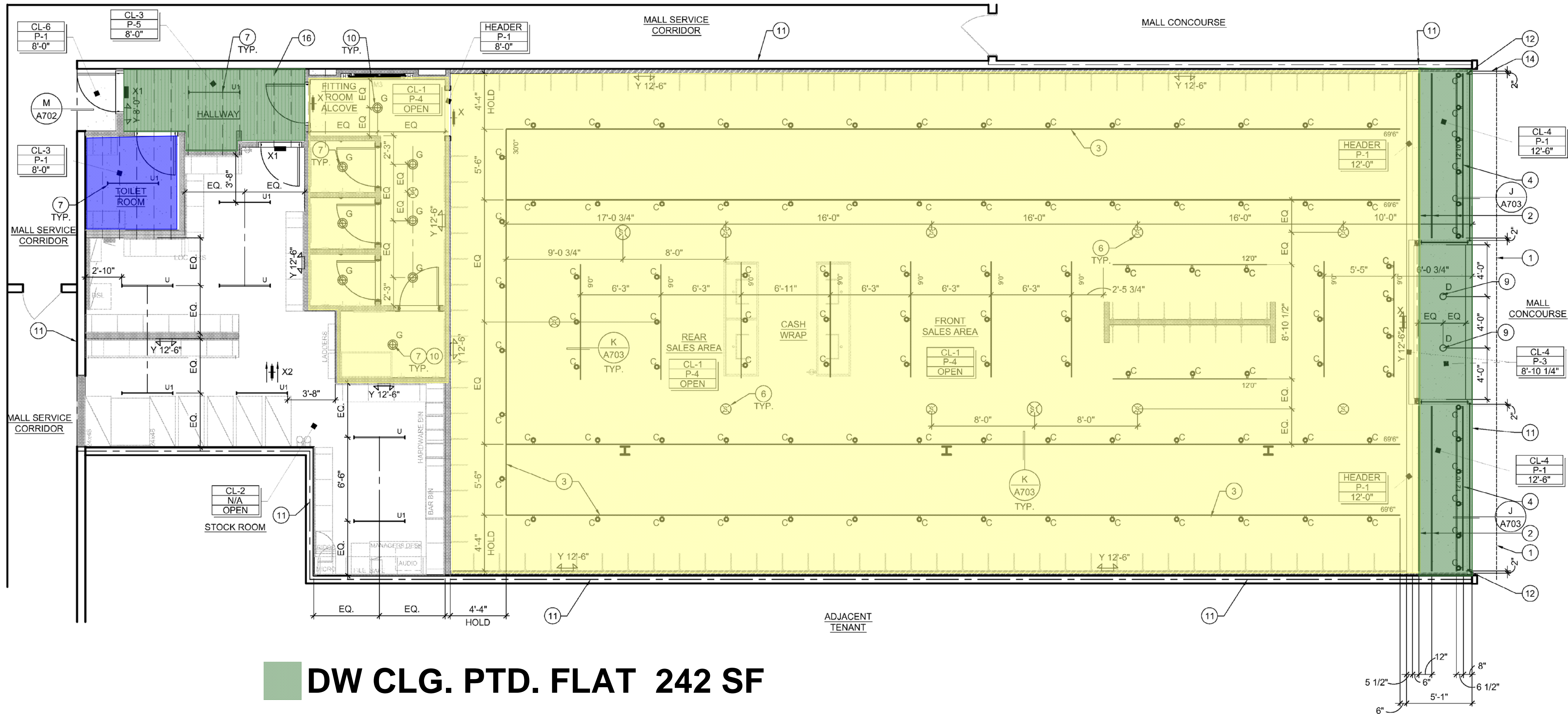
 WD. TRIM PTD. 334 LF

 12' DW WALLS LES 2,049 SF

 4'6" DW PRIME ONLY 187 SF

 4'6" DW WALLS EPOXY 129 SF

 19' DW PRIME ONLY 2,758 SF



- DW CLG. PTD. FLAT 242 SF
- DW CLG. PTD. EPOXY 50 SF
- EXP. CONST. CLG. W / WATERBORNE ACRYLIC DRYFALL 3,173 SF

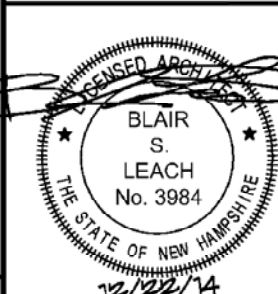
STORE #471

COPYRIGHT NOTICE:
These drawings and specifications are copyrighted and subject to copyright protection as an architectural work under sec. 17 of the copyright act, 17 U.S.C. As amended January 2002. The protection includes, without limitation, the overall form, arrangement and composition of spaces and elements of the design. Every drawing, including the use of these drawings and specifications may result in a violation of intellectual property, trade secret, and/or monetary liability.

PAC SUN

REVISIONS
PER CITY XX.XX.XXXX

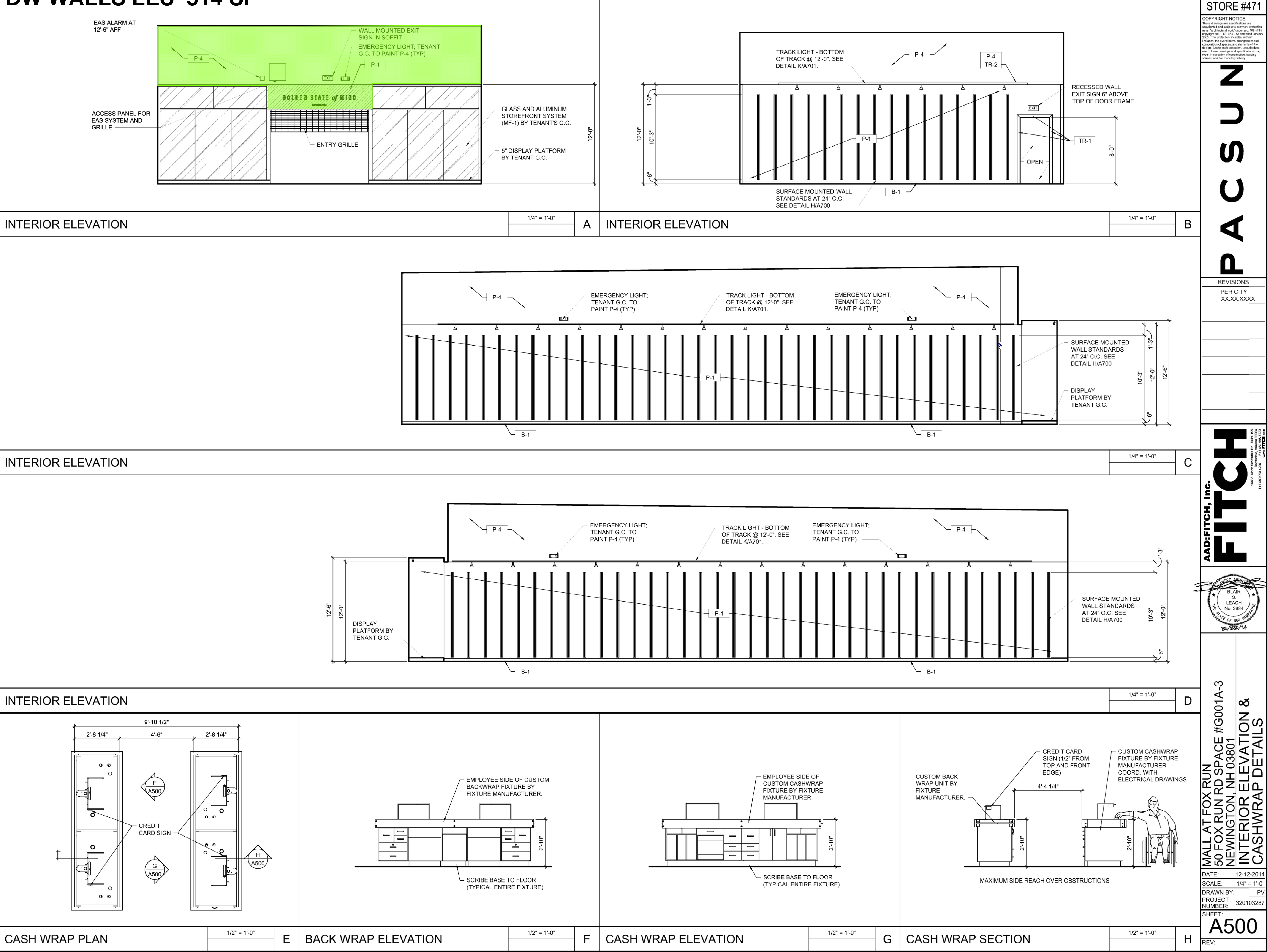
AAD:FITCH, Inc.
FITCH
1045 North Main Street, Suite 105
Dorchester, MA 01920
Tel: 617.552.0222
www.aadfitch.com



REFLECTED CEILING PLAN

REFLECTED CEILING PLAN NOTES		CEILING TAG	CEILING PLAN KEYNOTES		LIGHTING SCHEDULE			CEILING TYPES	
ALL SUSPENDED CEILINGS AND EQUIPMENT ARE TO BE SUSPENDED FROM STRUCTURAL STEEL ONLY. FOR BEAMS, ANCHOR TO TOP OR BOTTOM FLANGE. FOR STEEL TRUSSES, GIRDERS, AND JOISTS, ANCHOR TO TOP CHORD OR, IF NECESSARY TO SUSPEND FROM BOTTOM CHORD, HANG ONLY FROM PANEL POINTS AND BRACE TO TOP CHORD. DO NOT ANCHOR TO DECK PIPES, DUCTS, ETC.		CEILING TYPE — CL-2 CEILING FINISH — P-2 CEILING HEIGHT — X'-X"	①	LINE OF EXISTING MALL BULKHEAD	SYMBOL	TAG	DESCRIPTION	CL-1	SALES AREA/FITTING ROOM ALCOVE - OPEN: EXPOSED, PAINTED DECK AND STRUCTURE. DETAIL FOR EXPOSURE: ALL CONDUITS SHALL BE GANGED, PARALLEL & PERPENDICULAR TO LEASE LINES, ALL PIPES, DUCTS AND FIXTURES SHALL BE SUPPORTED BY HANGRODS, NOT WIRE. REMOVE ANY UNUSED ITEMS. PAINT ALL ITEMS ABOVE 12'-0" P-4.
TENANT G.C. SHALL SLEEVE, FIRESTOP, FLASH, CAULK, ETC. ALL PENETRATIONS THRU SLAB(S) AND / OR ROOF DECK SO THAT LIQUIDS AND/OR ODORS SHALL NOT PENETRATE. G.C. TO MAINTAIN ANY EXISTING FIRE ASSEMBLY RATINGS.			②	IMAGE TRACKS PLACEMENT AS SHOWN. SEE SHEET A401.	●	C	TRACK MOUNTED LIGHT - BOTTOM AT 12' A.F.F. AT OPEN CEILING		CL-2
FIRE PROTECTION SPRINKLER SYSTEM AND FIRE ALARMS SHALL BE SUBMITTED AND REVIEWED UNDER SEPARATE PERMIT (NOT INCLUDED IN THIS SET).		③	SUSPENDED TRACK FIXTURES (TYPICAL IN SALES AREA)	○	D	RECESSED DOWN LIGHT	CL-3	TOILET ROOM/HALLWAY: - GYP. BD. 5/8" TYPE 'X' GYP. BD. OVER METAL STUD FRAMING PER PLANS. TAPE JOINTS, SAND SMOOTH, PREPARE SURFACE FOR PAINT FINISH AND PAINT PER PLAN	
ALL VERTICAL UTILITIES SUCH AS PIPING, DUCTWORK, CONDUIT, ETC. ABOVE STORAGE PLATFORM SHALL BE INSTALLED CLOSE TO WALLS TO ALLOW MAXIMUM USE OF DECK.		④	CEILING MOUNTED TRACK FIXTURES	⊕	G	PENDANT LIGHT - BOTTOM AT 12' A.F.F. SEE DETAIL R/A703		CL-4	STOREFRONT SOFFIT: - GYP. BD. 5/8" TYPE 'X' GYP. BD. OVER 3 5/8" METAL STUDS @ 16" O.C. WITH TAPED JOINTS, SANDED SMOOTH. PREPARE FOR PAINT FINISH AND PAINT PER PLAN. SEE NA700 FOR SUSPENDED GYP. BD. DETAIL.
INSTALL CAPS ON ENDS OF LIGHT TRACKS. PAINT TO MATCH CEILING COLOR		⑤	SUSPENDED SPEAKERS/SUBWOOFERS. SEE SHEETS E500 - E501	—	H	MIRROR COVE LIGHT - 2 SIZES (H1 AND H2) SEE A501B AND E100	CL-5		SALES AREA/HALLWAY: - GYP. BD. 5/8" TYPE 'X' GYP. BD. OVER 3 5/8" METAL STUDS @ 16" O.C. WITH TAPED JOINTS, SANDED SMOOTH, PREPARE FOR PAINT FINISH AND PAINT PER PLAN. SEE NA700 FOR SUSPENDED GYP. BD. DETAIL.
		⑥	LIGHT FIXTURE TO BE CENTERED IN CEILING/ROOM	⌋	L, M	SURFACE MOUNTED LED - TAG LISTS LENGTH OF FIXTURE. SEE A401 AND ELECTRICAL SHEETS		CL-6	VESTIBULE - GYP. BD. (1 HOUR RATED): (2) LAYERS 5/8" TYPE 'X' GYP. BD. CEILING ON METAL STUD FRAMING PER PLANS. TAPE JOINTS, SAND SMOOTH, PREPARE SURFACE FOR PAINT FINISH AND PAINT WITH LEVEL 4 FINISH.
		⑦	RECESSED LIGHT FIXTURE CENTERED ON ENTRY	⊙	S	SUSPENDED SPEAKER @ 12'-0" A.F.F. - SEE E500 SHEET	CL-7		TOILET ROOM/HALLWAY: - GYP. BD. 5/8" TYPE 'X' GYP. BD. OVER 3 5/8" METAL STUDS @ 16" O.C. WITH TAPED JOINTS, SANDED SMOOTH, PREPARE FOR PAINT FINISH AND PAINT PER PLAN. SEE NA700 FOR SUSPENDED GYP. BD. DETAIL.
		⑧	SUSPENDED PENDANT LIGHT FIXTURE	⊙	S1	SUSPENDED SUBWOOFER @ 12'-0" A.F.F. - SEE E500 SHEET		CL-8	TOILET ROOM/HALLWAY: - GYP. BD. 5/8" TYPE 'X' GYP. BD. OVER 3 5/8" METAL STUDS @ 16" O.C. WITH TAPED JOINTS, SANDED SMOOTH, PREPARE FOR PAINT FINISH AND PAINT PER PLAN. SEE NA700 FOR SUSPENDED GYP. BD. DETAIL.
		⑨	LEASE LINE	⌋	U	48" FLUORESCENT FIXTURE; CHAIN HUNG IN OPEN CEILING AREA / SURFACE MOUNTED AT ALL OTHER CEILINGS. (U1 - SAME FIXTURE WITH EMERGENCY BALLAST)	CL-9		TOILET ROOM/HALLWAY: - GYP. BD. 5/8" TYPE 'X' GYP. BD. OVER 3 5/8" METAL STUDS @ 16" O.C. WITH TAPED JOINTS, SANDED SMOOTH, PREPARE FOR PAINT FINISH AND PAINT PER PLAN. SEE NA700 FOR SUSPENDED GYP. BD. DETAIL.
		⑩	LED LIGHTS AT BACKSIDE OF MULLION	⌋	X	WALL MOUNTED ILLUMINATED EXIT SIGN		CL-10	TOILET ROOM/HALLWAY: - GYP. BD. 5/8" TYPE 'X' GYP. BD. OVER 3 5/8" METAL STUDS @ 16" O.C. WITH TAPED JOINTS, SANDED SMOOTH, PREPARE FOR PAINT FINISH AND PAINT PER PLAN. SEE NA700 FOR SUSPENDED GYP. BD. DETAIL.
		⑪	BLADE SIGN. SEE A400	⌋	X1	ILLUMINATED 1 FACED UNIVERSAL MOUNT EXIT SIGN	CL-11		TOILET ROOM/HALLWAY: - GYP. BD. 5/8" TYPE 'X' GYP. BD. OVER 3 5/8" METAL STUDS @ 16" O.C. WITH TAPED JOINTS, SANDED SMOOTH, PREPARE FOR PAINT FINISH AND PAINT PER PLAN. SEE NA700 FOR SUSPENDED GYP. BD. DETAIL.
		⑫	DIRECTION OF PLATFORM FRAMING. SEE A600	⌋	X2	ILLUMINATED DIRECTIONAL UNIVERSAL MOUNT EXIT SIGN		CL-12	TOILET ROOM/HALLWAY: - GYP. BD. 5/8" TYPE 'X' GYP. BD. OVER 3 5/8" METAL STUDS @ 16" O.C. WITH TAPED JOINTS, SANDED SMOOTH, PREPARE FOR PAINT FINISH AND PAINT PER PLAN. SEE NA700 FOR SUSPENDED GYP. BD. DETAIL.
				⌋	Y	SURFACE MOUNTED DUAL HEAD EMERGENCY LIGHT UNIT WITH COMPACT BATTERY PACK. TENANT G.C. TO PAINT TO MATCH CEILING (TYP).	CL-13		TOILET ROOM/HALLWAY: - GYP. BD. 5/8" TYPE 'X' GYP. BD. OVER 3 5/8" METAL STUDS @ 16" O.C. WITH TAPED JOINTS, SANDED SMOOTH, PREPARE FOR PAINT FINISH AND PAINT PER PLAN. SEE NA700 FOR SUSPENDED GYP. BD. DETAIL.
				⌋				CL-14	TOILET ROOM/HALLWAY: - GYP. BD. 5/8" TYPE 'X' GYP. BD. OVER 3 5/8" METAL STUDS @ 16" O.C. WITH TAPED JOINTS, SANDED SMOOTH, PREPARE FOR PAINT FINISH AND PAINT PER PLAN. SEE NA700 FOR SUSPENDED GYP. BD. DETAIL.
				⌋			CL-15		TOILET ROOM/HALLWAY: - GYP. BD. 5/8" TYPE 'X' GYP. BD. OVER 3 5/8" METAL STUDS @ 16" O.C. WITH TAPED JOINTS, SANDED SMOOTH, PREPARE FOR PAINT FINISH AND PAINT PER PLAN. SEE NA700 FOR SUSPENDED GYP. BD. DETAIL.
				⌋				CL-16	TOILET ROOM/HALLWAY: - GYP. BD. 5/8" TYPE 'X' GYP. BD. OVER 3 5/8" METAL STUDS @ 16" O.C. WITH TAPED JOINTS, SANDED SMOOTH, PREPARE FOR PAINT FINISH AND PAINT PER PLAN. SEE NA700 FOR SUSPENDED GYP. BD. DETAIL.
				⌋			CL-17		TOILET ROOM/HALLWAY: - GYP. BD. 5/8" TYPE 'X' GYP. BD. OVER 3 5/8" METAL STUDS @ 16" O.C. WITH TAPED JOINTS, SANDED SMOOTH, PREPARE FOR PAINT FINISH AND PAINT PER PLAN. SEE NA700 FOR SUSPENDED GYP. BD. DETAIL.
				⌋				CL-18	TOILET ROOM/HALLWAY: - GYP. BD. 5/8" TYPE 'X' GYP. BD. OVER 3 5/8" METAL STUDS @ 16" O.C. WITH TAPED JOINTS, SANDED SMOOTH, PREPARE FOR PAINT FINISH AND PAINT PER PLAN. SEE NA700 FOR SUSPENDED GYP. BD. DETAIL.
				⌋			CL-19		TOILET ROOM/HALLWAY: - GYP. BD. 5/8" TYPE 'X' GYP. BD. OVER 3 5/8" METAL STUDS @ 16" O.C. WITH TAPED JOINTS, SANDED SMOOTH, PREPARE FOR PAINT FINISH AND PAINT PER PLAN. SEE NA700 FOR SUSPENDED GYP. BD. DETAIL.
				⌋				CL-20	TOILET ROOM/HALLWAY: - GYP. BD. 5/8" TYPE 'X' GYP. BD. OVER 3 5/8" METAL STUDS @ 16" O.C. WITH TAPED JOINTS, SANDED SMOOTH, PREPARE FOR PAINT FINISH AND PAINT PER PLAN. SEE NA700 FOR SUSPENDED GYP. BD. DETAIL.
				⌋			CL-21		TOILET ROOM/HALLWAY: - GYP. BD. 5/8" TYPE 'X' GYP. BD. OVER 3 5/8" METAL STUDS @ 16" O.C. WITH TAPED JOINTS, SANDED SMOOTH, PREPARE FOR PAINT FINISH AND PAINT PER PLAN. SEE NA700 FOR SUSPENDED GYP. BD. DETAIL.
				⌋				CL-22	TOILET ROOM/HALLWAY: - GYP. BD. 5/8" TYPE 'X' GYP. BD. OVER 3 5/8" METAL STUDS @ 16" O.C. WITH TAPED JOINTS, SANDED SMOOTH, PREPARE FOR PAINT FINISH AND PAINT PER PLAN. SEE NA700 FOR SUSPENDED GYP. BD. DETAIL.
				⌋			CL-23		TOILET ROOM/HALLWAY: - GYP. BD. 5/8" TYPE 'X' GYP. BD. OVER 3 5/8" METAL STUDS @ 16" O.C. WITH TAPED JOINTS, SANDED SMOOTH, PREPARE FOR PAINT FINISH AND PAINT PER PLAN. SEE NA700 FOR SUSPENDED GYP. BD. DETAIL.
				⌋				CL-24	TOILET ROOM/HALLWAY: - GYP. BD. 5/8" TYPE 'X' GYP. BD. OVER 3 5/8" METAL STUDS @ 16" O.C. WITH TAPED JOINTS, SANDED SMOOTH, PREPARE FOR PAINT FINISH AND PAINT PER PLAN. SEE NA700 FOR SUSPENDED GYP. BD. DETAIL.
				⌋			CL-25		TOILET ROOM/HALLWAY: - GYP. BD. 5/8" TYPE 'X' GYP. BD. OVER 3 5/8" METAL STUDS @ 16" O.C. WITH TAPED JOINTS, SANDED SMOOTH, PREPARE FOR PAINT FINISH AND PAINT PER PLAN. SEE NA700 FOR SUSPENDED GYP. BD. DETAIL.
				⌋				CL-26	TOILET ROOM/HALLWAY: - GYP. BD. 5/8" TYPE 'X' GYP. BD. OVER 3 5/8" METAL STUDS @ 16" O.C. WITH TAPED JOINTS, SANDED SMOOTH, PREPARE FOR PAINT FINISH AND PAINT PER PLAN. SEE NA700 FOR SUSPENDED GYP. BD. DETAIL.
				⌋			CL-27		TOILET ROOM/HALLWAY: - GYP. BD. 5/8" TYPE 'X' GYP. BD. OVER 3 5/8" METAL STUDS @ 16" O.C. WITH TAPED JOINTS, SANDED SMOOTH, PREPARE FOR PAINT FINISH AND PAINT PER PLAN. SEE NA700 FOR SUSPENDED GYP. BD. DETAIL.
				⌋				CL-28	TOILET ROOM/HALLWAY: - GYP. BD. 5/8" TYPE 'X' GYP. BD. OVER 3 5/8" METAL STUDS @ 16" O.C. WITH TAPED JOINTS, SANDED SMOOTH, PREPARE FOR PAINT FINISH AND PAINT PER PLAN. SEE NA700 FOR SUSPENDED GYP. BD. DETAIL.
				⌋			CL-29		TOILET ROOM/HALLWAY: - GYP. BD. 5/8" TYPE 'X' GYP. BD. OVER 3 5/8" METAL STUDS @ 16" O.C. WITH TAPED JOINTS, SANDED SMOOTH, PREPARE FOR PAINT FINISH AND PAINT PER PLAN. SEE NA700 FOR SUSPENDED GYP. BD. DETAIL.
				⌋				CL-30	TOILET ROOM/HALLWAY: - GYP. BD. 5/8" TYPE 'X' GYP. BD. OVER 3 5/8" METAL STUDS @ 16" O.C. WITH TAPED JOINTS, SANDED SMOOTH, PREPARE FOR PAINT FINISH AND PAINT PER PLAN. SEE NA700 FOR SUSPENDED GYP. BD. DETAIL.
				⌋			CL-31		TOILET ROOM/HALLWAY: - GYP. BD. 5/8" TYPE 'X' GYP. BD. OVER 3 5/8" METAL STUDS @ 16" O.C. WITH TAPED JOINTS, SANDED SMOOTH, PREPARE FOR PAINT FINISH AND PAINT PER PLAN. SEE NA700 FOR SUSPENDED GYP. BD. DETAIL.
				⌋				CL-32	TOILET ROOM/HALLWAY: - GYP. BD. 5/8" TYPE 'X' GYP. BD. OVER 3 5/8" METAL STUDS @ 16" O.C. WITH TAPED JOINTS, SANDED SMOOTH, PREPARE FOR PAINT FINISH AND PAINT PER PLAN. SEE NA700 FOR SUSPENDED GYP. BD. DETAIL.
				⌋			CL-33		TOILET ROOM/HALLWAY: - GYP. BD. 5/8" TYPE 'X' GYP. BD. OVER 3 5/8" METAL STUDS @ 16" O.C. WITH TAPED JOINTS, SANDED SMOOTH, PREPARE FOR PAINT FINISH AND PAINT PER PLAN. SEE NA700 FOR SUSPENDED GYP. BD. DETAIL.
				⌋				CL-34	TOILET ROOM/HALLWAY: - GYP. BD. 5/8" TYPE 'X' GYP. BD. OVER 3 5/8" METAL STUDS @ 16" O.C. WITH TAPED JOINTS, SANDED SMOOTH, PREPARE FOR PAINT FINISH AND PAINT PER PLAN. SEE NA700 FOR SUSPENDED GYP. BD. DETAIL.
				⌋			CL-35		TOILET ROOM/HALLWAY: - GYP. BD. 5/8" TYPE 'X' GYP. BD. OVER 3 5/8" METAL STUDS @ 16" O.C. WITH TAPED JOINTS, SANDED SMOOTH, PREPARE FOR PAINT FINISH AND PAINT PER PLAN. SEE NA700 FOR SUSPENDED GYP. BD. DETAIL.
				⌋				CL-36	TOILET ROOM/HALLWAY: - GYP. BD. 5/8" TYPE 'X' GYP. BD. OVER 3 5/8" METAL STUDS @ 16" O.C. WITH TAPED JOINTS, SANDED SMOOTH, PREPARE FOR PAINT FINISH AND PAINT PER PLAN. SEE NA700 FOR SUSPENDED GYP. BD. DETAIL.
				⌋			CL-37		TOILET ROOM/HALLWAY: - GYP. BD. 5/8" TYPE 'X' GYP. BD. OVER 3 5/8" METAL STUDS @ 16" O.C. WITH TAPED JOINTS, SANDED SMOOTH, PREPARE FOR PAINT FINISH AND PAINT PER PLAN. SEE NA700 FOR SUSPENDED GYP. BD. DETAIL.
				⌋				CL-38	TOILET ROOM/HALLWAY: - GYP. BD. 5/8" TYPE 'X' GYP. BD. OVER 3 5/8" METAL STUDS @ 16" O.C. WITH TAPED JOINTS, SANDED SMOOTH, PREPARE FOR PAINT FINISH AND PAINT PER PLAN. SEE NA700 FOR SUSPENDED GYP. BD. DETAIL.
				⌋			CL-39		TOILET ROOM/HALLWAY: - GYP. BD. 5/8" TYPE 'X' GYP. BD. OVER 3 5/8" METAL STUDS @ 16" O.C. WITH TAPED JOINTS, SANDED SMOOTH, PREPARE FOR PAINT FINISH AND PAINT PER PLAN. SEE NA700 FOR SUSPENDED GYP. BD. DETAIL.
				⌋				CL-40	TOILET ROOM/HALLWAY: - GYP. BD. 5/8" TYPE 'X' GYP. BD. OVER 3 5/8" METAL STUDS @ 16" O.C. WITH TAPED JOINTS, SANDED SMOOTH, PREPARE FOR PAINT FINISH AND PAINT PER PLAN. SEE NA700 FOR SUSPENDED GYP. BD. DETAIL.
				⌋			CL-41		TOILET ROOM/HALLWAY: - GYP. BD. 5/8" TYPE 'X' GYP. BD. OVER 3 5/8" METAL STUDS @ 16" O.C. WITH TAPED JOINTS, SANDED SMOOTH, PREPARE FOR PAINT FINISH AND PAINT PER PLAN. SEE NA700 FOR SUSPENDED GYP. BD. DETAIL.
				⌋				CL-42	TOILET ROOM/HALLWAY: - GYP. BD. 5/8" TYPE 'X' GYP. BD. OVER 3 5/8" METAL STUDS @ 16" O.C. WITH TAPED JOINTS, SANDED SMOOTH, PREPARE FOR PAINT FINISH AND PAINT PER PLAN. SEE NA700 FOR SUSPENDED GYP. BD. DETAIL.
				⌋			CL-43		TOILET ROOM/HALLWAY: - GYP. BD. 5/8" TYPE 'X' GYP. BD. OVER 3 5/8" METAL STUDS @ 16" O.C. WITH TAPED JOINTS, SANDED SMOOTH, PREPARE FOR PAINT FINISH AND PAINT PER PLAN. SEE NA700 FOR SUSPENDED GYP. BD. DETAIL.
				⌋				CL-44	TOILET ROOM/HALLWAY: - GYP. BD. 5/8" TYPE 'X' GYP. BD. OVER 3 5/8" METAL STUDS @ 16" O.C. WITH TAPED JOINTS, SANDED SMOOTH, PREPARE FOR PAINT FINISH AND PAINT PER PLAN. SEE NA700 FOR SUSPENDED GYP. BD. DETAIL.
				⌋			CL-45		TOILET ROOM/HALLWAY: - GYP. BD. 5/8" TYPE 'X' GYP. BD. OVER 3 5/8" METAL STUDS @ 16" O.C. WITH TAPED JOINTS, SANDED SMOOTH, PREPARE FOR PAINT FINISH AND PAINT PER PLAN. SEE NA700 FOR SUSPENDED GYP. BD. DETAIL.
				⌋				CL-46	TOILET ROOM/HALLWAY: - GYP. BD. 5/8" TYPE 'X' GYP. BD. OVER 3 5/8" METAL STUDS @ 16" O.C. WITH TAPED JOINTS, SANDED SMOOTH, PREPARE FOR PAINT FINISH AND PAINT PER PLAN. SEE NA700 FOR SUSPENDED GYP. BD. DETAIL.
				⌋			CL-47		TOILET ROOM/HALLWAY: - GYP. BD. 5/8" TYPE 'X' GYP. BD. OVER 3 5/8" METAL STUDS @ 16" O.C. WITH TAPED JOINTS, SANDED SMOOTH, PREPARE FOR PAINT FINISH AND PAINT PER PLAN. SEE NA700 FOR SUSPENDED GYP. BD. DETAIL.
				⌋				CL-48	TOILET ROOM/HALLWAY: - GYP. BD. 5/8" TYPE 'X' GYP. BD. OVER 3 5/8" METAL STUDS @ 16" O.C. WITH TAPED JOINTS, SANDED SMOOTH, PREPARE FOR PAINT FINISH AND PAINT PER PLAN. SEE NA700 FOR SUSPENDED GYP. BD. DETAIL.
				⌋			CL-49		TOILET ROOM/HALLWAY: - GYP. BD. 5/8" TYPE 'X' GYP. BD. OVER 3 5/8" METAL STUDS @ 16" O.C. WITH TAPED JOINTS, SANDED SMOOTH, PREPARE FOR PAINT FINISH AND PAINT PER PLAN. SEE NA700 FOR SUSPENDED GYP. BD. DETAIL.
				⌋				CL-50	TOILET ROOM/HALLWAY: - GYP. BD. 5/8" TYPE 'X' GYP. BD. OVER 3 5/8" METAL STUDS @ 16" O.C. WITH TAPED JOINTS, SANDED SMOOTH, PREPARE FOR PAINT FINISH AND PAINT PER PLAN. SEE NA700 FOR SUSPENDED GYP. BD. DETAIL.
				⌋			CL-51		TOILET ROOM/HALLWAY: - GYP. BD. 5/8" TYPE 'X' GYP. BD. OVER 3 5/8" METAL STUDS @ 16" O.C. WITH TAPED JOINTS, SANDED SMOOTH, PREPARE FOR PAINT FINISH AND PAINT PER PLAN. SEE NA700 FOR SUSPENDED GYP. BD. DETAIL.
				⌋				CL-52	TOILET ROOM/HALLWAY: - GYP. BD. 5/8" TYPE 'X' GYP. BD. OVER 3 5/8" METAL STUDS @ 16" O.C. WITH TAPED JOINTS, SANDED SMOOTH, PREPARE FOR PAINT FINISH AND PAINT PER PLAN. SEE NA700 FOR SUSPENDED GYP. BD. DETAIL.
				⌋			CL-53		TOILET ROOM/HALLWAY: - GYP. BD. 5/8" TYPE 'X' GYP. BD. OVER 3 5/8" METAL STUDS @ 16" O.C. WITH TAPED JOINTS, SANDED SMOOTH, PREPARE FOR PAINT FINISH AND PAINT PER PLAN. SEE NA700 FOR SUSPENDED GYP. BD. DETAIL.
				⌋				CL-54	TOILET ROOM/HALLWAY: - GYP. BD. 5/8" TYPE 'X' GYP. BD. OVER 3 5/8" METAL STUDS @ 16" O.C. WITH TAPED JOINTS, SANDED SMOOTH, PREPARE FOR PAINT FINISH AND PAINT PER PLAN. SEE NA700 FOR SUSPENDED GYP. BD. DETAIL.
				⌋			CL-55		TOILET ROOM/HALLWAY: - GYP. BD. 5/8" TYPE 'X' GYP. BD. OVER 3 5/8" METAL STUDS @ 16" O.C. WITH TAPED JOINTS, SANDED SMOOTH, PREPARE FOR PAINT FINISH AND PAINT PER PLAN. SEE NA700 FOR SUSPENDED GYP. BD. DETAIL.
				⌋				CL-56	TOILET ROOM/HALLWAY: - GYP. BD. 5/8" TYPE 'X' GYP. BD. OVER 3 5/8" METAL STUDS @ 16" O.C. WITH TAPED JOINTS, SANDED SMOOTH, PREPARE FOR PAINT FINISH AND PAINT PER PLAN. SEE NA700 FOR SUSPENDED GYP. BD. DETAIL.
				⌋			CL-57		TOILET ROOM/HALLWAY: - GYP. BD. 5/8" TYPE 'X' GYP. BD. OVER 3 5/8" METAL STUDS @ 16" O.C. WITH TAPED JOINTS, SANDED SMOOTH, PREPARE FOR PAINT FINISH AND PAINT PER PLAN. SEE NA700 FOR SUSPENDED GYP. BD. DETAIL.
				⌋				CL-58	TOILET ROOM/HALLWAY: - GYP. BD. 5/8" TYPE 'X' GYP. BD. OVER 3 5/8" METAL STUDS @ 16" O.C. WITH TAPED JOINTS, SANDED SMOOTH, PREPARE FOR PAINT FINISH AND PAINT PER PLAN. SEE NA700 FOR SUSPENDED GYP. BD. DETAIL.
				⌋			CL-59		TOILET ROOM/HALLWAY: - GYP. BD. 5/8" TYPE 'X' GYP. BD. OVER 3 5/8" METAL STUDS @ 16" O.C. WITH TAPED JOINTS, SANDED SMOOTH, PREPARE FOR PAINT FINISH AND PAINT PER PLAN. SEE NA700 FOR SUSPENDED GYP. BD. DETAIL.
				⌋				CL-60	TOILET ROOM/HALLWAY: - GYP. BD. 5/8" TYPE 'X' GYP. BD. OVER 3 5/8" METAL STUDS @ 16" O.C. WITH TAPED JOINTS, SANDED SMOOTH, PREPARE FOR PAINT FINISH AND PAINT PER PLAN. SEE NA700 FOR SUSPENDED GYP. BD. DETAIL.
				⌋			CL-61		TOILET ROOM/HALLWAY: - GYP. BD. 5/8" TYPE 'X' GYP. BD. OVER 3 5/8" METAL STUDS @ 16" O.C. WITH TAPED JOINTS, SANDED SMOOTH, PREPARE FOR PAINT FINISH AND PAINT PER PLAN. SEE NA700 FOR SUSPENDED GYP. BD. DETAIL.
				⌋				CL-62	TOILET ROOM/HALLWAY: - GYP. BD. 5/8" TYPE 'X' GYP. BD. OVER 3 5/8" METAL STUDS @ 16" O.C. WITH TAPED JOINTS, SANDED SMOOTH, PREPARE FOR PAINT FINISH AND PAINT PER PLAN. SEE NA700 FOR SUSPENDED GYP. BD. DETAIL.
				⌋			CL-63		TOILET ROOM/HALLWAY: - GYP. BD. 5/8" TYPE 'X' GYP. BD. OVER 3 5/8" METAL STUDS @ 16" O.C. WITH TAPED JOINTS, SANDED SMOOTH, PREPARE FOR PAINT FINISH AND PAINT PER PLAN. SEE NA700 FOR SUSPENDED GYP. BD. DETAIL.
				⌋				CL-64	TOILET ROOM/HALLWAY: - GYP. BD. 5/8" TYPE 'X' GYP. BD. OVER 3 5/8" METAL STUDS @ 16" O.C. WITH TAPED JOINTS, SANDED SMOOTH, PREPARE FOR PAINT FINISH AND PAINT PER PLAN. SEE NA700 FOR SUSPENDED GYP. BD. DETAIL.
				⌋			CL-65		TOILET ROOM/HALLWAY: - GYP. BD. 5/8" TYPE 'X' GYP. BD. OVER 3 5/8" METAL STUDS @ 16" O.C. WITH TAPED JOINTS, SANDED SMOOTH, PREPARE FOR PAINT FINISH AND PAINT PER PLAN. SEE NA700 FOR SUSPENDED GYP. BD. DETAIL.
				⌋				CL-66	TOILET ROOM/HALLWAY: - GYP. BD. 5/8" TYPE 'X' GYP. BD. OVER 3 5/8" METAL STUDS @ 16" O.C. WITH TAPED JOINTS, SANDED SMOOTH, PREPARE FOR PAINT FINISH AND PAINT PER PLAN. SEE NA700 FOR SUSPENDED GYP. BD. DETAIL.
				⌋			CL-67		TOILET ROOM/HALLWAY: - GYP. BD. 5/8" TYPE 'X' GYP. BD. OVER 3 5/8" METAL STUDS @ 16" O.C. WITH TAPED JOINTS, SANDED SMOOTH, PREPARE FOR PAINT FINISH AND PAINT PER PLAN. SEE NA700 FOR SUSPENDED GYP. BD. DETAIL.
				⌋				CL-68	TOILET ROOM/HALLWAY: - GYP. BD. 5/8" TYPE 'X' GYP. BD. OVER 3 5/8" METAL STUDS @ 16" O.C. WITH TAPED JOINTS, SANDED SMOOTH, PREPARE FOR PAINT FINISH AND PAINT PER PLAN. SEE NA700 FOR SUSPENDED GYP. BD. DETAIL.
				⌋			CL-69		TOILET ROOM/HALLWAY: - GYP. BD. 5/8" TYPE 'X' GYP. BD. OVER 3 5/8" METAL STUDS @ 16" O.C. WITH TAPED JOINTS, SANDED SMOOTH, PREPARE FOR PAINT FINISH AND PAINT PER PLAN. SEE NA700 FOR SUSPENDED GYP. BD. DETAIL.
				⌋				CL-70	TOILET ROOM/HALLWAY: - GYP. BD. 5/8" TYPE 'X' GYP. BD. OVER 3 5/8" METAL STUDS @ 16" O.C. WITH TAPED JOINTS, SANDED SMOOTH, PREPARE FOR PAINT FINISH AND PAINT PER PLAN. SEE NA700 FOR SUSPENDED GYP. BD. DETAIL.
				⌋			CL-71		TOILET ROOM/HALLWAY: - GYP. BD. 5/8" TYPE 'X' GYP. BD. OVER 3 5/8" METAL STUDS @ 16" O.C. WITH TAPED JOINTS, SANDED SMOOTH, PREPARE FOR PAINT FINISH AND PAINT PER PLAN. SEE NA700 FOR SUSPENDED GYP. BD. DETAIL.
				⌋				CL-72	TOILET ROOM/HALLWAY: - GYP. BD. 5/8" TYPE 'X' GYP. BD. OVER 3 5/8" METAL STUDS @ 16" O.C. WITH TAPED JOINTS, SANDED SMOOTH, PREPARE FOR PAINT FINISH AND PAINT PER PLAN. SEE NA700 FOR SUSPENDED GYP. BD. DETAIL.
				⌋			CL-73		TOILET ROOM/HALLWAY: - GYP. BD. 5/8" TYPE 'X' GYP. BD. OVER 3 5/8" METAL STUDS @ 16" O.C. WITH TAPED JOINTS, SANDED SMOOTH, PREPARE FOR PAINT FINISH AND PAINT PER PLAN. SEE NA700 FOR SUSPENDED GYP. BD. DETAIL.
				⌋				CL-74	TOILET ROOM/HALLWAY: - GYP. BD. 5/8" TYPE 'X' GYP. BD. OVER 3 5/8" METAL STUDS @ 16" O.C. WITH TAPED JOINTS, SANDED SMOOTH, PREPARE FOR PAINT FINISH AND PAINT PER PLAN. SEE NA700 FOR SUSPENDED GYP. BD. DETAIL.
				⌋			CL-75		TOILET ROOM/HALLWAY: - GYP. BD. 5/8" TYPE 'X' GYP. BD. OVER 3 5/8" METAL STUDS @ 16" O.C. WITH TAPED JOINTS, SANDED SMOOTH, PREPARE FOR PAINT FINISH AND PAINT PER PLAN. SEE NA700 FOR SUSPENDED GYP. BD. DETAIL.
				⌋				CL-76	TOILET ROOM/HALLWAY: - GYP. BD. 5/8" TYPE 'X' GYP. BD. OVER 3 5/8" METAL STUDS @ 16" O.C. WITH TAPED JOINTS, SANDED SMOOTH, PREPARE FOR PAINT FINISH AND PAINT PER PLAN. SEE NA700 FOR SUSPENDED GYP. BD. DETAIL.
				⌋			CL-77		TOILET ROOM/HALLWAY: - GYP. BD. 5/8" TYPE 'X' GYP. BD. OVER 3 5/8" METAL STUDS @ 16" O.C. WITH TAPED JOINTS, SANDED SMOOTH, PREPARE FOR PAINT FINISH AND PAINT PER PLAN. SEE NA700 FOR SUSPENDED GYP. BD. DETAIL.
				⌋				CL-78	TOILET ROOM/HALLWAY: - GYP. BD. 5/8" TYPE 'X' GYP. BD. OVER 3 5/8" METAL STUDS @ 16" O.C. WITH TAPED JOINTS, SANDED SMOOTH, PREPARE FOR PAINT FINISH AND PAINT PER PLAN. SEE NA700 FOR SUSPENDED GYP. BD. DETAIL.
				⌋			CL-79		TOILET ROOM/HALLWAY: - GYP. BD. 5/8" TYPE 'X' GYP. BD. OVER 3 5/8" METAL STUDS @ 16" O.C. WITH TAPED JOINTS, SANDED SMOOTH, PREPARE FOR PAINT FINISH AND PAINT PER PLAN. SEE NA700 FOR SUSPENDED GYP. BD. DETAIL.
				⌋				CL-80	TOILET ROOM/HALLWAY: - GYP. BD. 5/8" TYPE 'X' GYP. BD. OVER 3 5/8" METAL STUDS @ 16" O.C. WITH TAPED JOINTS, SANDED SMOOTH, PREPARE FOR PAINT FINISH AND PAINT PER PLAN. SEE NA70

AREA DW WALLS LES 314 SF



Copyright Notice:

These drawings and specifications are copyrighted and subject to copyright protection as an "architectural work" under sec. 102 of the copyright act, 17 U.S.C. As amended January 2002. The protection includes, without limitation, the overall form, arrangement and composition of spaces, and elements of the design. Every graphic, including the use of these drawings and specifications may result in violation of intellectual property rights, and/or monetary liability.

REVISIONS

PER CITY	XX.XX.XXXX

AAD-FITCH, Inc.

FITCH

1045 North Main Street, Suite 105
Durham, New Hampshire 03824
Tel: 603.288.1234
www.aad-fitch.com

BLAIR S. LEACH
No. 3984
12/22/14
STATE OF NEW HAMPSHIRE

DATE: 12-12-2014
SCALE: 1/4" = 1'-0"
DRAWN BY: PV
PROJECT NUMBER: 320103287
SHEET: A500
REV: